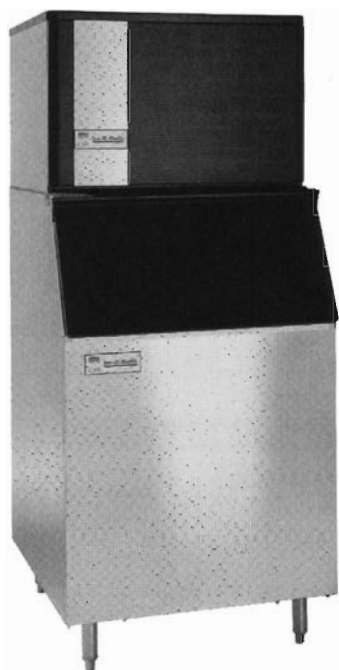


ICE 600 Series Cube Ice Maker

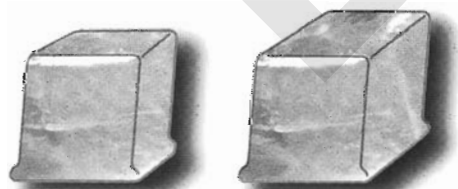


ICE 600 shown on model B-55 Bin

ICE 600

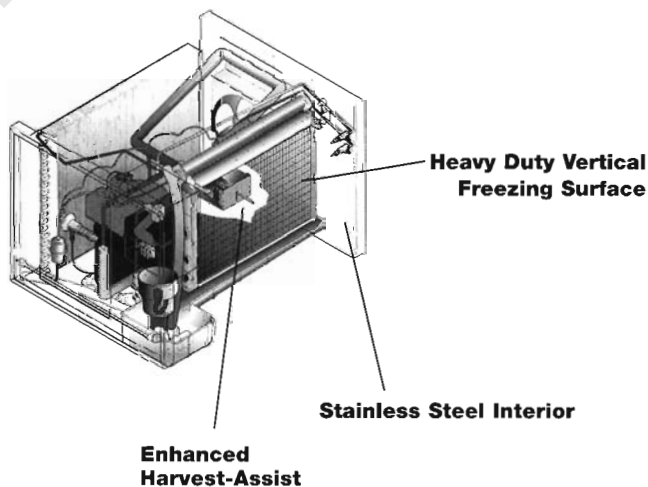
Produces up to 727 lbs. (330 Kgs.)* of ice per day.

- Constructed from sturdy, corrosion-proof 304 stainless steel—inside and out.
- Most advanced “Harvest Assist” system gets ice to the bin quicker. It conserves energy and increases compressor life.
- Easy to service and install. The ICE Series™ machines have electro-mechanical controls.
- Works on all standard industry dispensers and bins.
- Environmentally responsible. All ICE Series™ machines use R-404A, an approved, non-ozone depleting refrigerant.
- Proven “classic cube” shape. Half cube and Full cube systems available.
- Available with an air-, water- or remote-cooled condenser. ICE 606 air-cooled model is available with side or top discharge.



Half Cube Full Cube
7/8" x 7/8" x 3/8" 7/8" x 7/8" x 7/8"
(22mm x 22mm x 10mm) (22mm x 22mm x 22mm)

Not shown actual size



Ice-O-Matic®

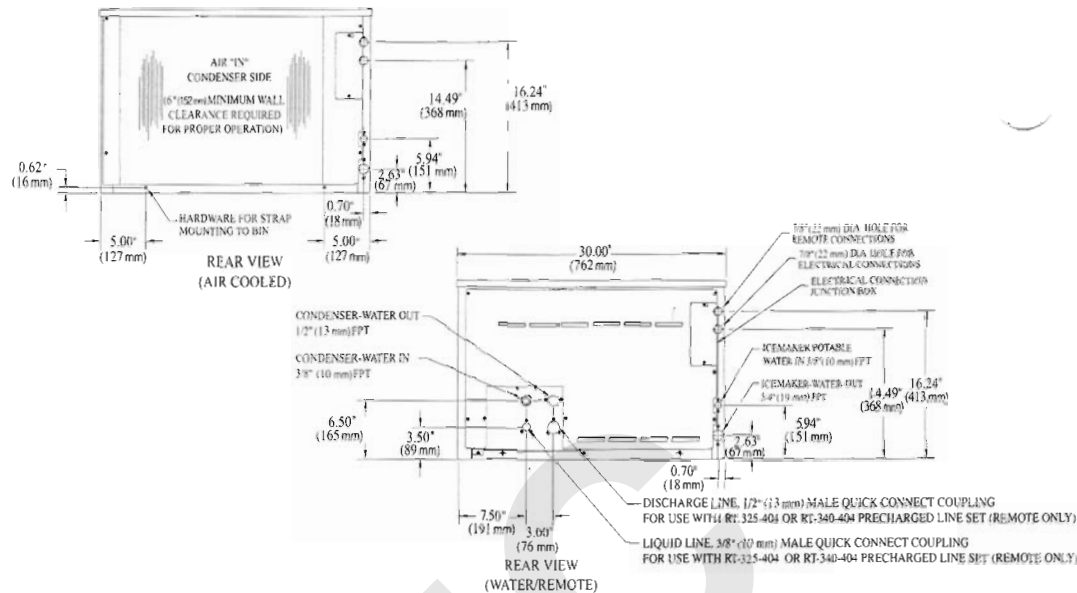
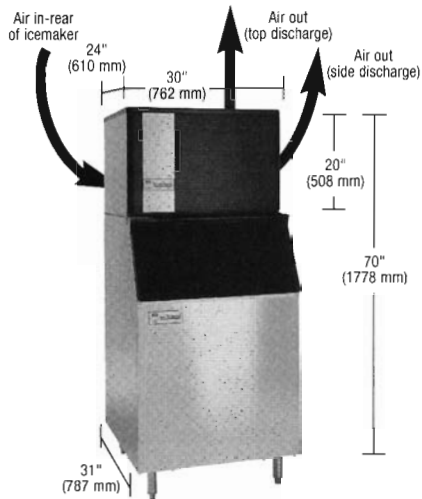
A WELBILT Company



*Tested at 70° Air/50° Water

ICE 600 Series Cube Ice Maker

Dimensions and Air Flow



ICE PRODUCTION CHART POUNDS (KILOGRAMS) PER 24 HOURS

ICE 606					ICE 605			
Conds. Unit	Air Temp. °F (°C)	Water Temp. °F (°C)			Air Temp. °F (°C)	Water Temp. °F (°C)		
		80°(27°)	70°(21°)	50°(10°)		80°(27°)	70°(21°)	50°(10°)
Air Cooled	90° (32°)	488 (222)	525 (239)	597 (272)	90° (32°)	433 (197)	466 (212)	528 (240)
	80° (27°)	551 (250)	592 (269)	652 (296)	80° (27°)	486 (221)	523 (238)	575 (261)
	70° (21°)	597 (271)	642 (292)	706 (321)	70° (21°)	526 (239)	565 (257)	622 (283)
Water Cooled	90° (32°)	549 (249)	590 (268)	613 (279)	90° (32°)	437 (199)	470 (214)	504 (229)
	80° (27°)	532 (242)	573 (260)	630 (286)	80° (27°)	448 (203)	481 (219)	530 (241)
	70° (21°)	547 (249)	588 (267)	647 (294)	70° (21°)	469 (213)	504 (229)	555 (252)
Remote Cooled	90° (32°)	506 (230)	544 (247)	617 (281)	90° (32°)	395 (180)	425 (193)	485 (221)
	80° (27°)	568 (258)	611 (278)	672 (306)	80° (27°)	449 (204)	482 (219)	531 (241)
	70° (21°)	615 (279)	661 (300)	727 (330)	70° (21°)	487 (221)	524 (238)	576 (262)
	50° (10°)			742 (337)	50° (10°)			588 (267)
	30° (-1°)			756 (344)	30° (-1°)			599 (272)
	0° (-18°)			771 (351)	0° (-18°)			611 (278)

- 90°/70° figures are rated in accordance with ARI Standard 810. All remaining points are mathematical estimates.
- All specifications and performance data are subject to normal manufacturing variances.

OPERATING LIMITS

Ambient Temp. Range	50° - 110°F (10° - 43°C)
Air & Water Remote	-20° - 110°F (-29° - 43°C)
Water Temp. Range	40° - 100°F (4.5° - 38°C)
Water Pressure Ice Maker	Min. 20 psi (1.4 bar)
Water in	Max. 60 psi (6.9 bar)
Condenser Inlet Water (Water cooled only)	Min. 20 psi (1.4 bar)
	Max. 60 psi (6.9 bar)

ORDERING AND SPECIFICATION INFORMATION

Model No.	Cond. Unit	Ice Production per 24 hrs. at 70° Air/50° Water lbs. (Kgs.)	Ice Production per 24 hrs. at 90° Air/70° Water lbs. (Kgs.)	Water Used-Gals. (Lits.) per 100 lbs. of Ice 90° Air/70° Water		Kilowatts Used per 100 lbs. of Ice 90° Air 70° Water	Btuh	Voltage Characteristics	No. of Wires	Min. Circuit Amp.	Max. Fuse Size	Shipping Weight lbs. (Kgs.)
				Ice Prod. Use	Cond. Use							
ICE0606♣A	Air	706 (321)	525 (239)	23.5 (89)	n/a	6.5	11538	208-230/60/1	3	12.4	15	175 (80)
ICE0606♣W	Water	647 (294)	590 (268)	27.4 (104)	196.9 (745)	5.1	11473	208-230/60/1	3	9.5	15	170 (77)
ICE0606♣R	Remote	727 (330)	544 (247)	21.6 (82)	n/a	6.8	12269	208-230/60/1	3	13.0	15	170 (77)
ICE0605♣A	Air	622 (283)	466 (212)	21.9 (83)	n/a	6.5	10284	230/50/1	3	8.8	15	175 (80)
ICE0605♣W	Water	555 (252)	470 (214)	27.2 (103)	126.1 (477)	6.0	9909	230/50/1	3	6.8	15	175 (80)
ICE0605♣R	Remote	576 (262)	425 (193)	25.1 (95)	n/a	8.2	10708	230/50/1	3	9.9	15	170 (77)
ERC-1062	Remote Condenser for 1 or 2 model ICE 600R (208-230/50-60/1 voltage)											95 (43)
RT-325-404	25 ft. (7.6m) Precharged Tubing Kit for R-404A models											13 (6)
RT-340-404	40 ft. (12m) Precharged Tubing Kit for R-404A models											18 (8)

See Bin specification sheet for information on ice storage bins

♣ represents cube size. For full cube substitute an "F", for half cube substitute an "H".

Top discharge is available on ICE 606 air-cooled model, just substitute a "T" for the "A" in the model number.

Please note: air-cooled units require 6" (152 mm) clearance for air intake and exhaust.

EMF 800 Series Flake Ice Maker - Modular

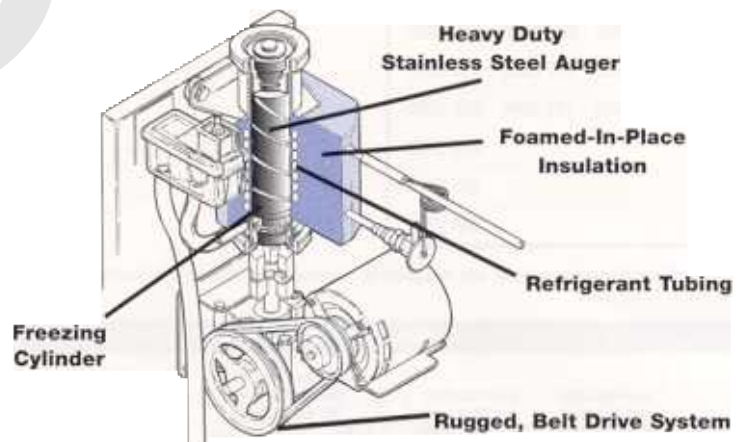


**EMF800 Flake Ice Maker
shown on model B-55 Bin**

EMF 800

Produces up to 852 lbs. (387 Kgs.)* of ice per day.

- Stainless steel exterior.
- Precision built evaporator features a durable freezing cylinder constructed of brass. The copper refrigerant tubing is "wrapped," then soldered around the outside of the freezing cylinder to create an efficient ice-making zone within the cylinder. The entire evaporator is encased with a foamed-in-place polyurethane insulation. The one-piece, heavy duty stainless steel auger moves ice upward through the cylinder and excess water is removed as the ice is pushed through the extruder, providing large, hard, dry flakes of ice.
- Works on all industry dispensers and bins.
- Simple and rugged belt drive system, unique to Ice-O-Matic, is much more tolerant of a wide variety of operating conditions as compared to direct drive type flakers.
- Environmentally responsible. EMF Series machines use R-404A, an approved, non-ozone depleting refrigerant.
- Available with an air-, water- or remote-cooled condenser.

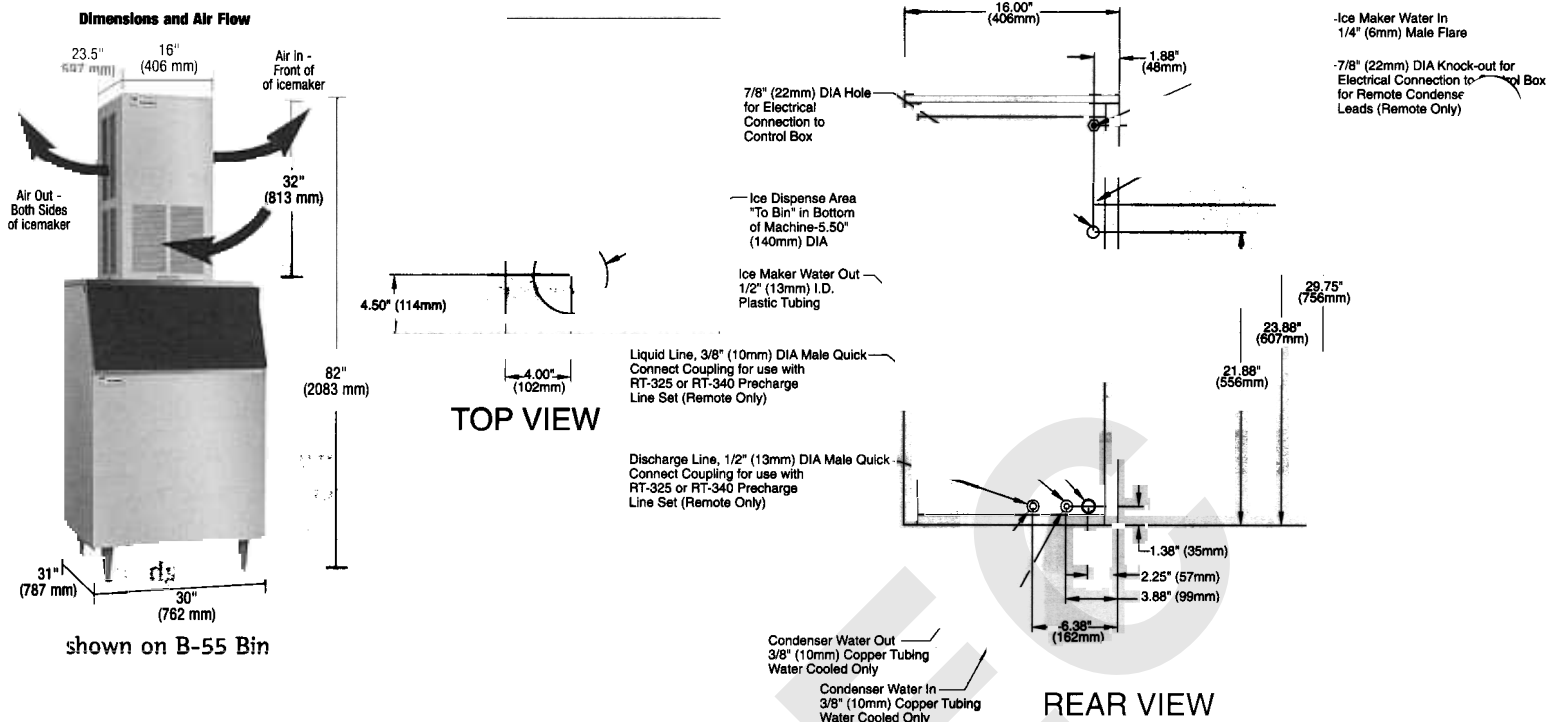


A **WELBILT** Company



*Tested at 70° Air/50° Water

EMF 800 Series Flake Ice Maker - Modular



ICE PRODUCTION CHART POUNDS (KILOGRAMS) PER 24 HOURS

EMF 800					EMF 705			
Conds. Unit	Air Temp. °F (°C)	Water Temp. °F (°C)			Air Temp. °F (°C)	Water Temp. °F (°C)		
		80°(27°)	70°(21°)	50°(10°)		80°(27°)	70°(21°)	50°(10°)
Air Cooled	90° (32°)	588 (267)	632 (287)	691 (314)	90° (32°)	568 (258)	641 (291)	625 (284)
	80° (27°)	622 (283)	669 (304)	736 (334)	80° (27°)	613 (278)	692 (314)	723 (328)
	70° (21°)	659 (300)	709 (322)	780 (355)	70° (21°)	662 (301)	748 (339)	821 (373)
Water Cooled	90° (32°)	703 (320)	756 (344)	794 (361)				
	80° (27°)	696 (316)	748 (340)	823 (374)				
	70° (21°)	720 (327)	774 (352)	852 (387)				
Remote Cooled	90° (32°)	584 (265)	628 (285)	714 (324)				
	80° (27°)	658 (299)	707 (321)	778 (354)				
	70° (21°)	712 (324)	765 (348)	842 (383)				
	50° (10°)			859 (390)				
	30° (-1°)			876 (398)				
	0° (-18°)			894 (406)				

OPERATING LIMITS

Ambient Temp. Range	50° - 110°F (10° - 43°C)
Air & Water	50° - 110°F (10° - 43°C)
Remote	-20° - 110°F (-29° - 43°C)
Water Temp. Range	40° - 100°F (4.5° - 38°C)
Water Pressure Ice Maker	Min. 20 psi (1.4 bar)
Water in	Max. 60 psi (6.9 bar)
Condenser Inlet Water	Min. 20 psi (1.4 bar)
(Water cooled only)	Max. 60 psi (6.9 bar)

All specifications and performance data are subject to normal manufacturing variances.

ORDERING AND SPECIFICATION INFORMATION

Model No.	Cond. Unit	Ice Production per 24 hrs. at 70° Air/50° Water lbs. (Kgs.)	Ice Production per 24 hrs. at 90° Air/70° Water lbs. (Kgs.)	Water Used-Gals. (Lits.) per 100 lbs. of Ice 90° Air/70° Water		Kilowatts Used per 100 lbs. of Ice 90° Air 70° Water	Btuh	Voltage Characteristics	No. of Wires	Min. Circuit Amp.	Max. Fuse Size	Shipping Weight lbs. (Kgs.)
				Ice Prod. Use	Cond. Use							
EMF800AS	Air	780 (355)	632 (287)	12.0 (45)	n/a	4.3	7693	115/60/1	3	19.8	20	205 (93)
EMF800WS	Water	852 (387)	756 (344)	12.0 (45)	146.6 (555)	3.2	8261	115/60/1	3	16.5	20	205 (93)
EMF800RS	Remote	842 (383)	628 (285)	12.0 (45)	n/a	4.7	8224	115/60/1	3	19.1	25	205 (93)
EMF705AS	Air	821 (373)	641 (291)	12.0 (45)	n/a	4.1	5170	230/50/1	3	8.6	15	205 (93)

See Bin specification sheet for information on ice storage bins

Please note: air-cooled units require 6" (152 mm) clearance for air intake and exhaust.